

## Analysis Report

<b>Project Name</b>	Purity Analysis
<b>Sample Description</b>	BPC157
<b>Sample Quantity</b>	1
<b>Order Number</b>	CPDC09302401
<b>Client</b>	Jonathan Barber
<b>Project Date</b>	2024-11
<b>Remark</b>	purity >90%

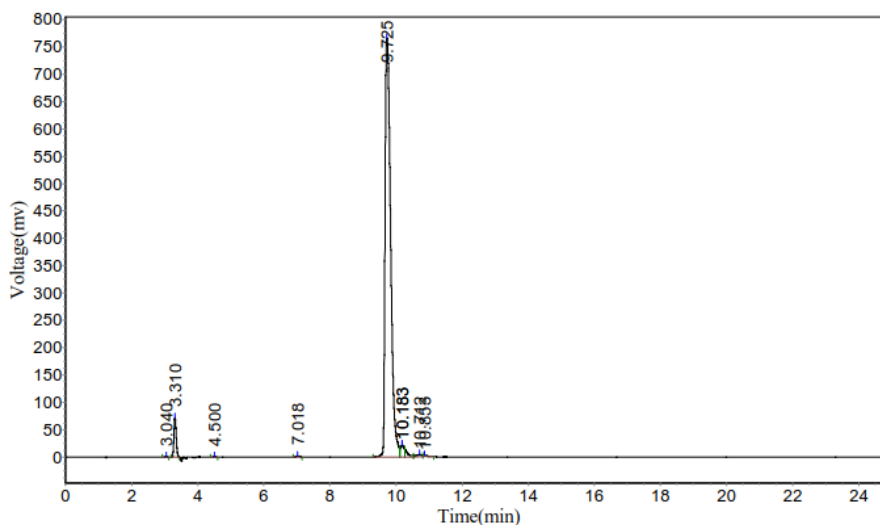
## 1. Sample Information

Purity analysis of peptide samples. It is detected using Shimadzu LC.

## 2. HPLC Analytical Methods

The HPLC analysis was performed using the HPLC system. Chromatographic separation was performed on Sinochrom ODS-BP (4.6 mm×250 mm, 5 μm) with column temperature set at 30°C. The mobile phase, which consisted of 0.1% trifluoroacetic acid water (A) and 0.1% trifluoroacetic acid-acetonitrile (B), was applied with the following programs: 0.01-20 min, 10%-100% B, 20-25.00 min, 100% B. The UV detection wavelength was at 220 nm. The flow rate was set at 1.0 mL/min and the injection volume was 10 μL.

## 3. HPLC Analytical Results



BPC157	retention time [min]	peak area	purity %
1	3.040	5913.800	
2	3.310	347555.938	
3	4.500	3648.900	
4	7.018	15284.851	
5	9.725	8969341.000	92.74
6	10.183	253312.117	
7	10.712	50766.406	
8	10.853	25706.160	